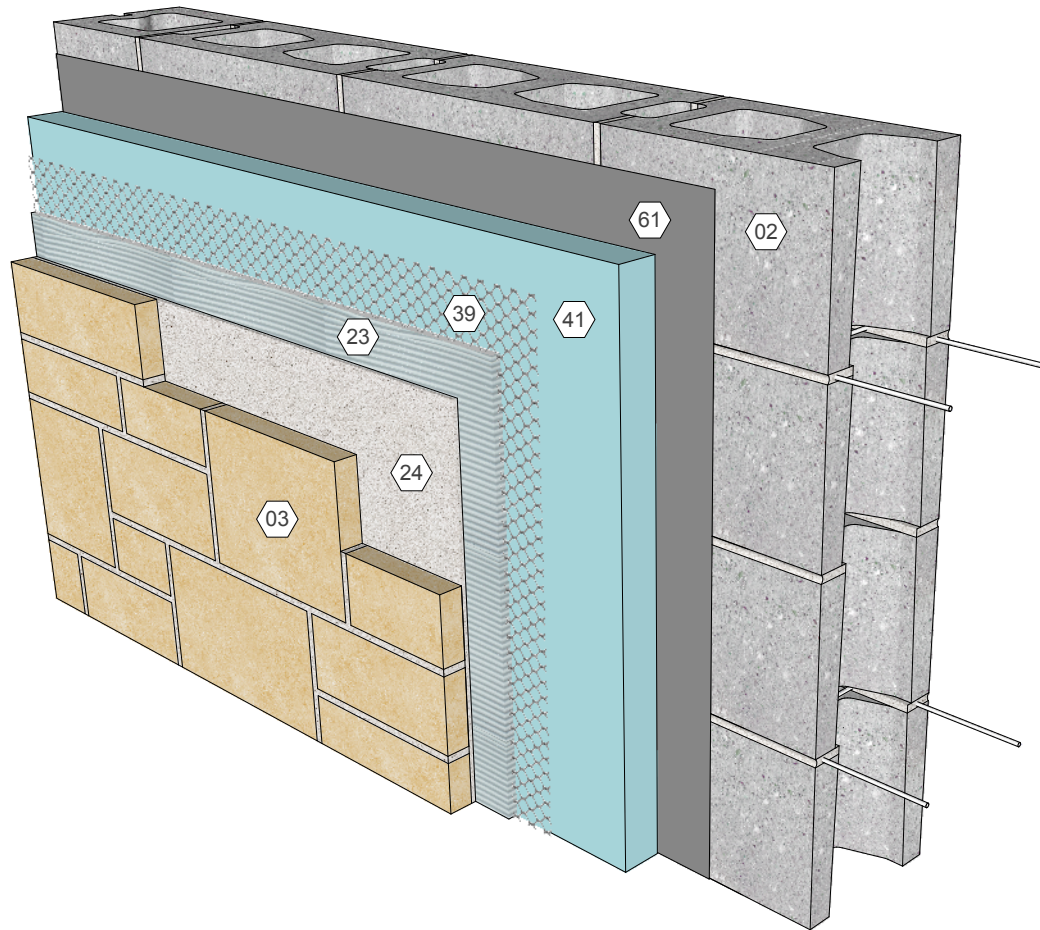


### KEY NOTES

- 02 Concrete masonry backup
- 41 Cont. Insulation
- 61 Air/moisture/vapor barrier as req'd
- 39 Metal lath
- 23 Mortar, scratch coat w/ lath embedded
- 24 Mortar, bond coat
- 03 Adhered veneer



### KEY WORDS

Adhered veneer, thin stone veneer, stone, CMU, lath, MVMA 48

International Masonry Institute



800-IMI-0988

[www.imiweb.org](http://www.imiweb.org)

**WALL SYSTEM** Adhered stone veneer over CMU backup, cont. insulation  
Detail 03.070.0201

Rev. 10/20/15

## Figure 48. Wall-Section Over Continuous Rigid Insulation CMU

