

MASONRY COPING: LIMESTONE, CAST STONE, CALCIUM SILICATE, OR PRECAST CONCRETE; OVERHANG MASONRY WALL 1½" MIN.; SLOPED TOP

HORIZONTAL DOWEL

SHIM AS REQUIRED

1/8" SAW-CUT DRIP, BOTH SIDES OF WALL CAP

FACE BRICK

RIGID INSULATION

OPEN DRAINAGE CAVITY, OPTIONAL ABOVE ROOF LINE

VERTICAL S.S. DOWEL W/ SEALANT AROUND PENETRATIONS THROUGH FLASHING

SEE DETAIL 01.759 FOR WALL CAP JOINT OPTIONS

SET COPING IN BED OF MORTAR (SEALANT & BACKER ROD, OPT.)

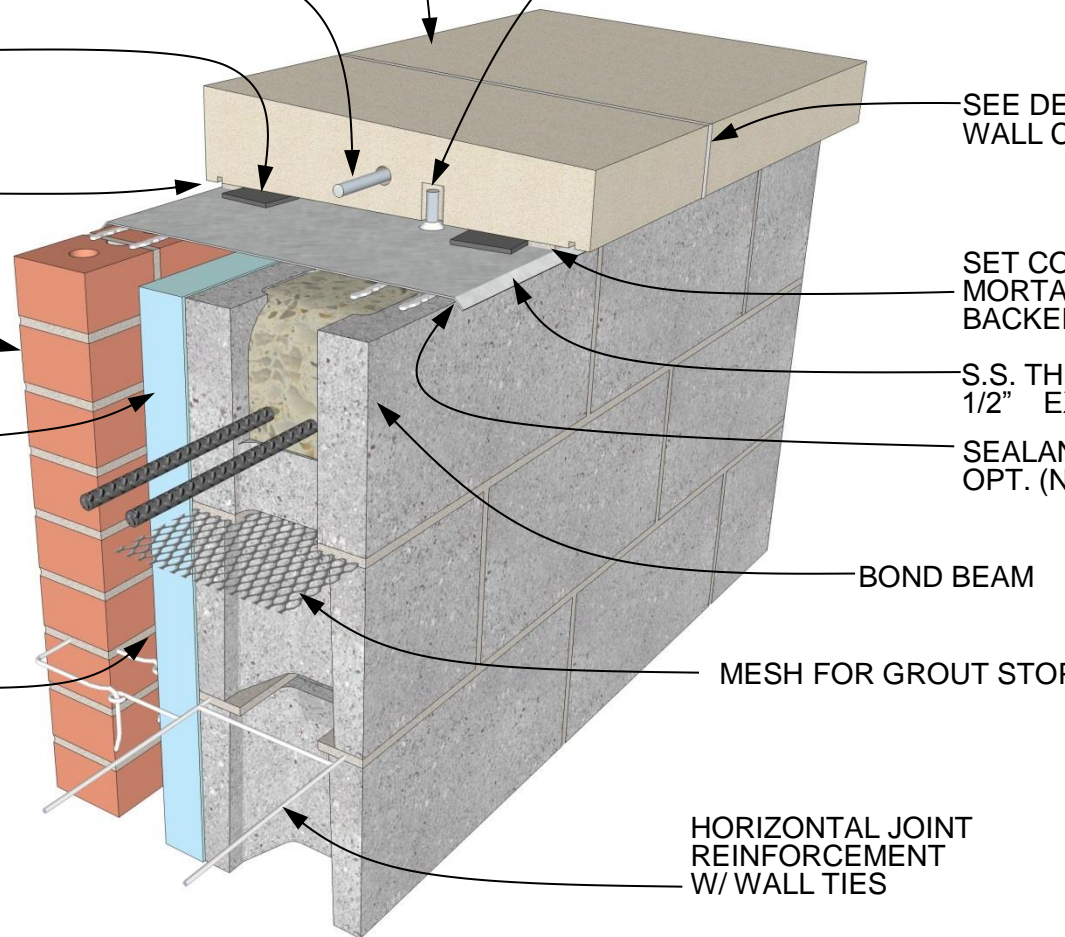
S.S. THRU-WALL FLASHING W/ 1/2" EXPOSED DRIP EDGE

SEALANT BELOW DRIP, OPT. (NOT SHOWN)

BOND BEAM

MESH FOR GROUT STOP

HORIZONTAL JOINT REINFORCEMENT W/ WALL TIES



MASONRY WALL CAP VERTICAL & HORIZONTAL DOWELS

DETAIL 01.030.0821

REV. 12/2/14

International Masonry Institute



800-IMI-0988 www.imiweb.org

© 2009 INTERNATIONAL MASONRY INSTITUTE