

MASONRY COPING: LIMESTONE, CAST STONE, CALCIUM SILICATE, OR PRECAST CONCRETE; OVERHANG MASONRY WALL 1½+MIN.; SLOPED TOP

1/8"+SAW-CUT DRIP, BOTH SIDES OF WALL CAP

SEALANT & BACKER ROD, BOTH SIDES OF WALL CAP

GROUT OR MORTAR FILL FOR DOWEL ANCHORAGE AND FLASHING SUPPORT

MESH TO RETAIN GROUT OR MORTAR FILL

DRAINAGE CAVITY

FACE BRICK

RIGID INSULATION

S.S. DOWEL W/ SEALANT AROUND PENETRATIONS THROUGH FLASHING

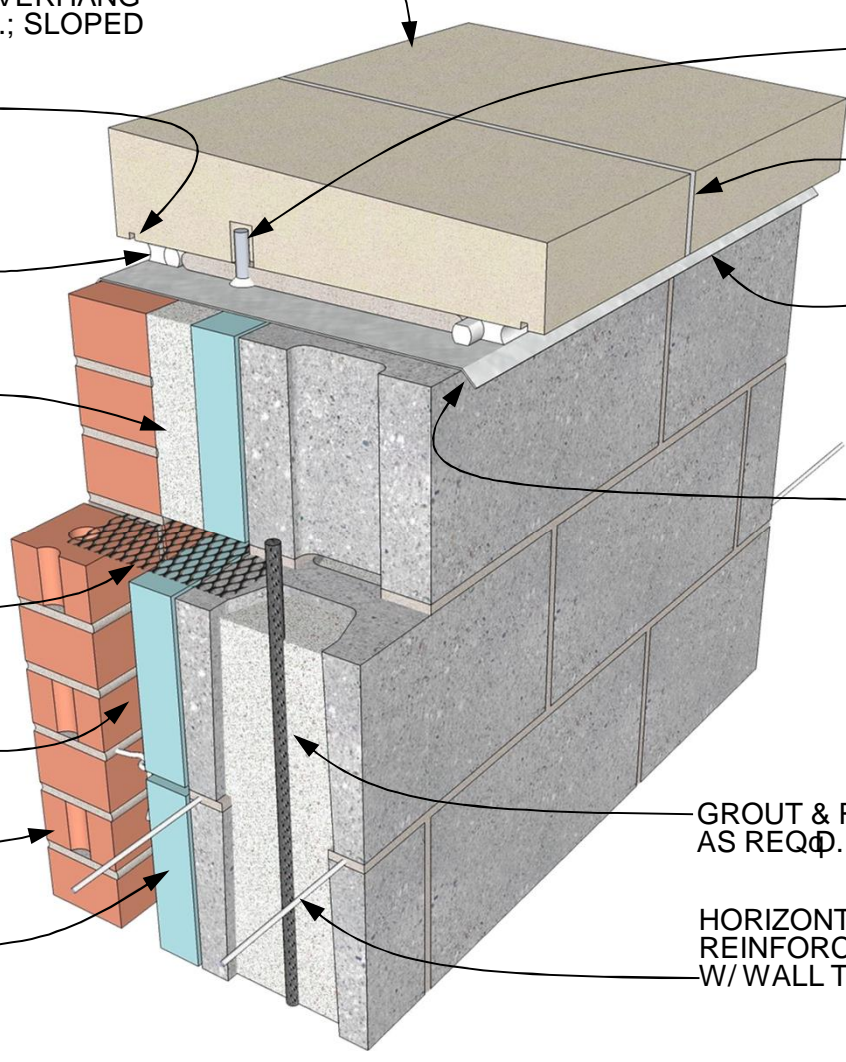
SEE DETAIL 01.759 FOR WALL CAP JOINT OPTIONS

THROUGH-WALL FLASHING W/ 1/2"+DRIP EDGE

SEALANT BELOW DRIP, OPT. (NOT SHOWN)

GROUT & REINFORCING AS REQ ϕ .

HORIZONTAL JOINT REINFORCEMENT W/ WALL TIES



MASONRY WALL CAP FILLED CAVITY

DETAIL 01.030.0802

REV. 011/04/08

International Masonry Institute



800-IMI-0988 www.imiweb.org

© 2011 INTERNATIONAL MASONRY INSTITUTE