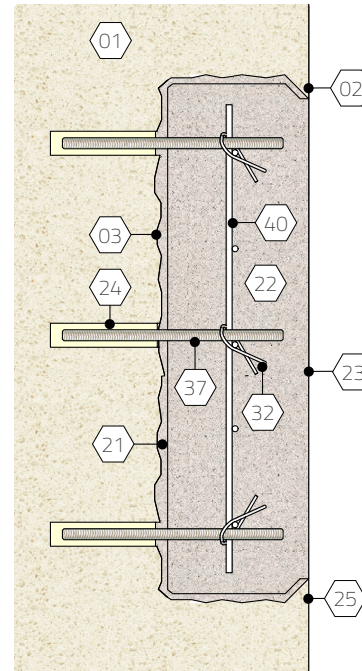


**3D view**



**Section view**

**KEY NOTES**

- 01 Existing masonry unit (e.g. stone, terra cotta, cast stone, etc.)
- 02 Saw-cut and key perimeter edge
- 03 Chip unit to rough surface; clean surface of dust and debris; prior to mortar placement, surface must be saturated surface dry (SSD) or surface moisture as required by composite mortar manufacturer
- 21 Base coat
- 22 Composite mortar
- 23 Finish to match existing profile and color; apply coating to match existing glaze or finish if required
- 24 Epoxy adhesive appropriate for setting threaded rod and required pullout strength
- 25 Clean surface of unit after repair
- 32 Tie wire
- 37 Stainless steel threaded rod, appropriate type, size, spacing and embedment depth
- 40 Stainless steel mesh sized for repair area; engage with anchors

**KEYWORDS**

Restoration, Repair, Masonry, Stone, Terra cotta, Cast stone, Composite mortar, Large patch, 10.4 10.0503

TITLE

Composite mortar repair | Large area (> 2 s.f. ±)

SCALE

Varies

REV.

05/13/20

SHEET NO.

10.410.0503