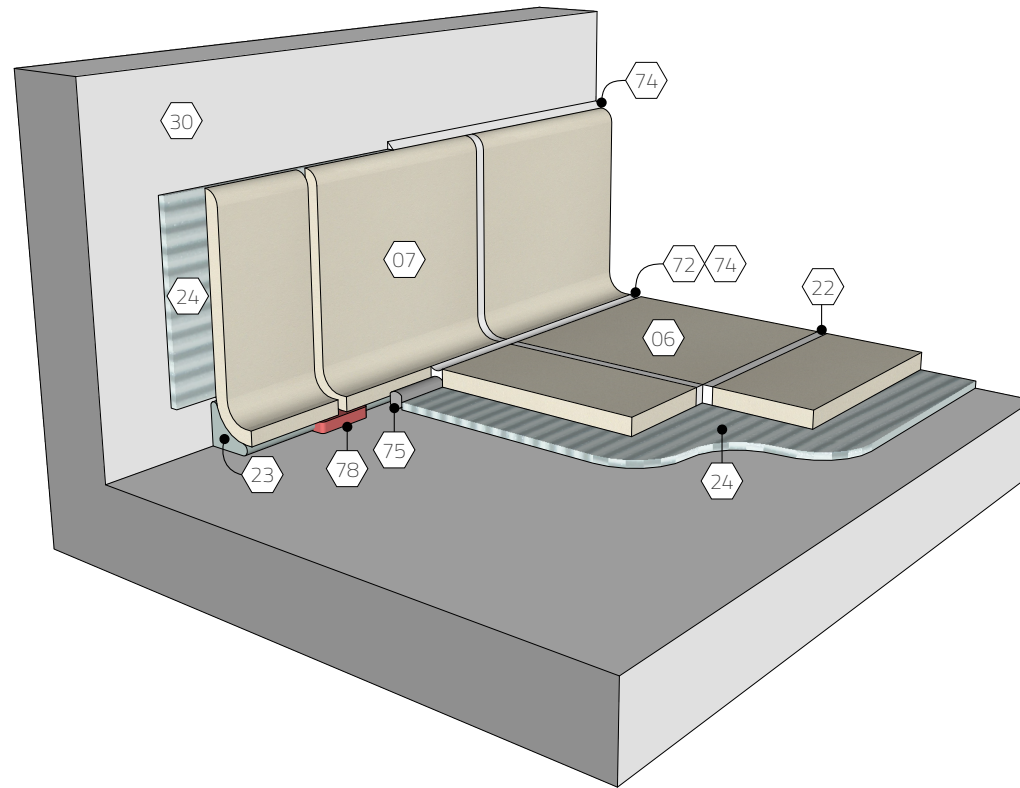
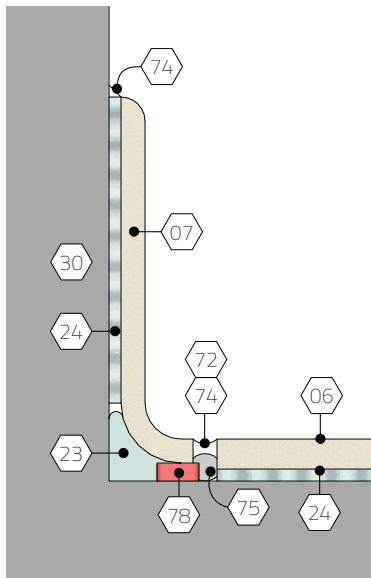


KEY NOTES

- 06 Floor tile
- 07 Sanitary tile base molding
- 22 Grout joint
- 23 Backfill behind cove w/ thinset mortar
- 24 Cementitious bond coat
- 30 Solid backing
- 72 Perimeter expansion joint
- 74 Sealant
- 75 Backer rod if specified
- 78 Shim as required to bring sanitary base to align w/ floor tile



1 Elevation
Scale: 6" = 1'-0"

2 3D View
Scale: None

KEYWORDS

Tile, Ceramic tile, Base, Cove, Sanitary, Molding, Expansion joint, Movement joint

TITLE

Tile base | Cove tile sanitary base

SCALE

Varies

REV.

08/06/20

SHEET NO.

06.130.0502