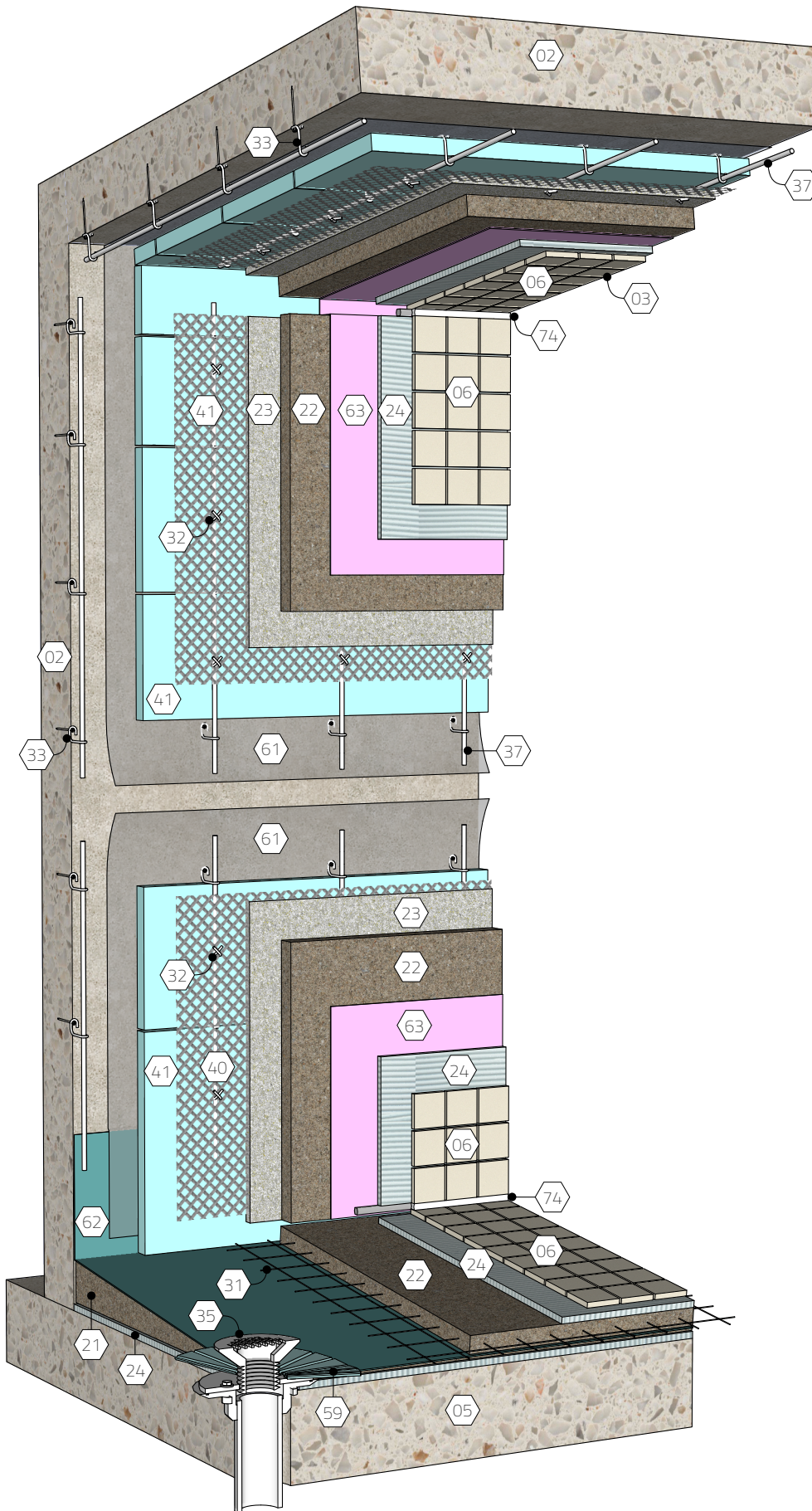


KEY NOTES

- 02 Concrete or masonry backing
- 03 Slope ceiling 2 in. per foot
- 05 Concrete slab
- 06 Tile
- 21 Pre-pitch mortar bed, slope 1/4" per foot to drain
- 22 Mortar bed
- 23 Scratch coat
- 24 Cementitious bond coat
- 31 Reinforcement as req'd
- 32 Tie wire to fasten lath to pencil rods
- 33 Anchor wire to anchor pencil rods to structure
- 35 Drain assembly
- 37 Pencil rod, 1/4" dia.
- 40 Metal lath
- 41 Rigid insulation
- 59 Weep protector
- 61 Vapor retarder, optional
- 62 Shower pan membrane, fold up walls min. 3" above top of curb (curb not shown)
- 63 Continuous bonded waterproof membrane
- 74 Sealed slip joint (perimeter expansion joint)

KEYWORDS

Steam room, Steam shower, Watertight installations, 06.110.0613, SR613, mud wall, mud floor



TITLE

Tile Steam Room Assembly | Masonry or concrete, mud walls, mud floor

SCALE

none

REV.

04/09/20

SHEET NO.

06.110.0613