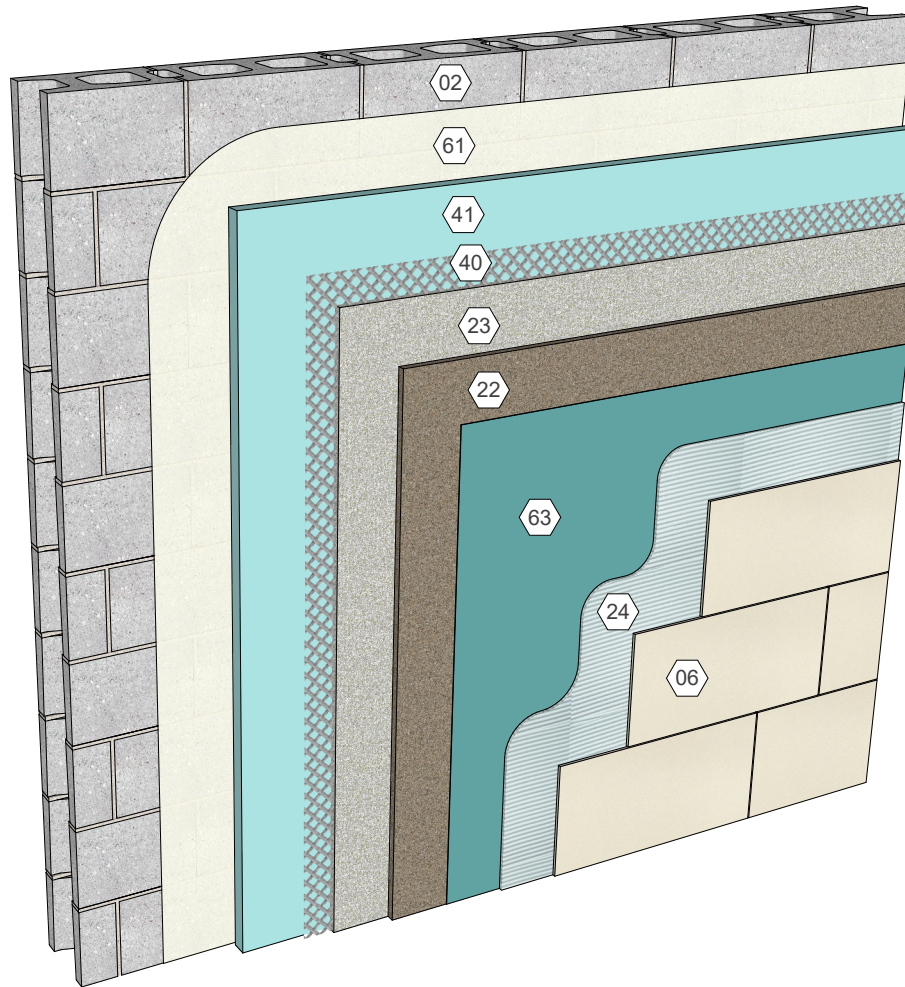


### KEY NOTES

- 02 Masonry or concrete
- 06 Tile
- 22 Mortar bed
- 23 Scratch coat
- 24 Cementitious bond coat
- 40 Metal lath
- 41 Rigid insulation
- 61 Air/moisture/vapor barrier as required
- 63 Waterproof membrane, optional



### KEY WORDS

Tile, Mortar bed, Wall, Exterior, 06.070.0201, Exterior wall, W201

TCNA W201

Exterior Wall Detail | Tile over masonry or concrete, mortar bed

Detail 06.070.0201

Rev. 05/02/18