

KEY NOTES

- 02 Concrete masonry
- 05 Suspended slab
- 22 Grout per structural design
- 36 Maintain 1 1/2" clear space between top course of CMU and plate above
- 37 Reinforcement per structural design
- 86 Wedge anchor
- 90 Steel plate
- 91 Steel angles welded to plates, w/ self tapping screws into CMU
- 95 Corrugated metal decking
- 97 Bond beam per structural design

KEYWORDS

CMU, Concrete masonry, Block, Structural, Reinforced, Suspended slab, Corrugated decking, Decking, Restraint, Northwest, 02.120.0216

TITLE

Wall restraint parallel to deck

SCALE

None

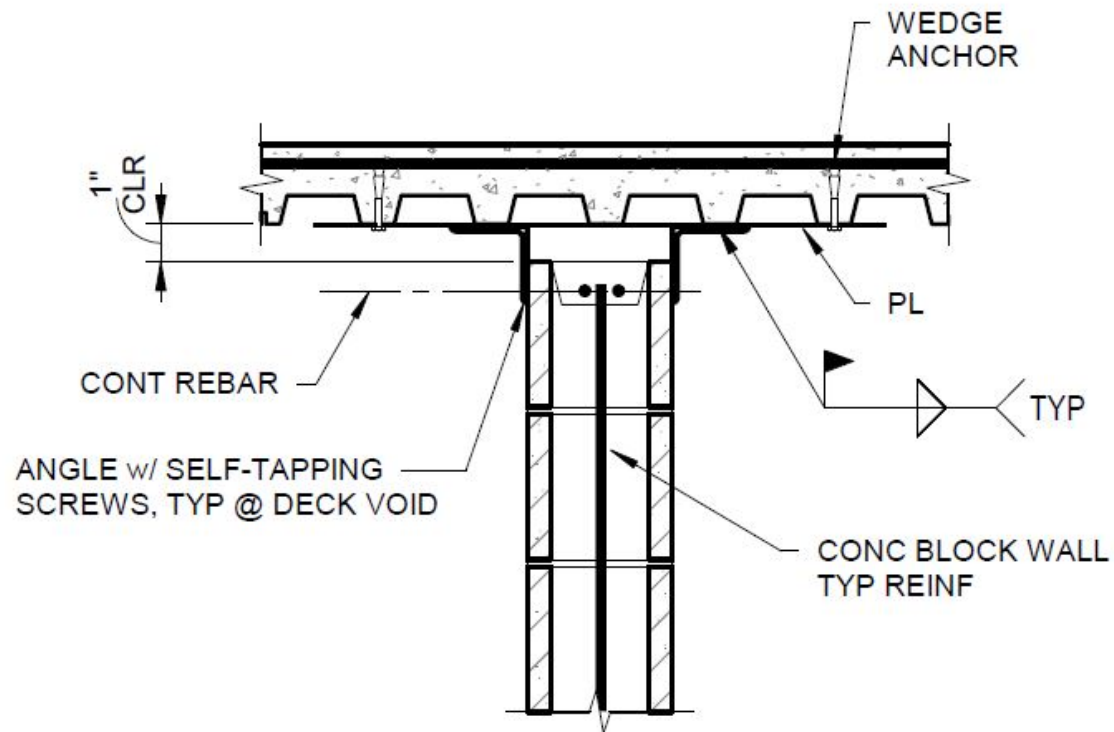
REV.

06/25/20

SHEET NO.

02.120.0216

Drawing No.	02.120.0216
Drawing Title	Wall restraint parallel to deck
Description	This detail shows the top of wall restraints where the corrugated decking runs parallel to the masonry wall. Angles on both sides of the wall are welded to a steel plate, which is anchored to the bottom of the flutes of the decking above. The angles are secured to the masonry with self tapping screws. The top of the masonry is held back about 1 1/2" from the plate above. This detail as shown is intended to illustrate a general concept or method of construction. Details that show different or modified concepts or methods can be of equal validity and should not be excluded from consideration. this detail shall not be used for construction without the approval an signature of a licensed design professional. The person using this detail shall be responsible for its complete design and proper application.
3D Warehouse Link	https://3dwarehouse.sketchup.com/model/4cd9753c-1bbd-4cab-b23c-aafa12df06f7/021200216-Wall-restraint-parallel-to-deck
Embed Code for 3D Warehouse Model	<iframe src="https://3dwarehouse.sketchup.com/embed/4cd9753c-1bbd-4cab-b23c-aafa12df06f7" frameborder="0" scrolling="no" marginheight="0" marginwidth="0" width="580" height="326" allowfullscreen></iframe>
IMI Interactive Model Blog Link	https://imisketchupmodels.blogspot.com/2020/06/021200216-wall-restraint-parallel-to.html
IMI MDS Link	
GIF Link	
GIF Link	
Team	Tonia Sorrell-Neal, Scott Conwell
Notes	
Date Revised	6/25/2020



THIS DETAIL AS SHOWN IS INTENDED TO ILLUSTRATE A GENERAL CONCEPT OR METHOD OF CONSTRUCTION. DETAILS THAT SHOW DIFFERENT OR MODIFIED CONCEPTS OR METHODS CAN BE OF EQUAL VALIDITY AND SHOULD NOT BE EXCLUDED FROM CONSIDERATION. THIS DETAIL SHALL NOT BE USED FOR CONSTRUCTION WITHOUT THE APPROVAL AND SIGNATURE OF A LICENSED DESIGN PROFESSIONAL. THE PERSON USING THIS DETAIL SHALL BE RESPONSIBLE FOR ITS COMPLETE DESIGN AND PROPER APPLICATION.

FIGURE 16 - WALL RESTRAINT PARALLEL TO DECK