

KEY NOTES

- 02 Concrete masonry
- 05 Concrete slab
- 22 Grout per structural design
- 37 Reinforcement per structural design
- 38 Vertical dowel w/ horizontal legs in alternating directions, lap over vertical bar per structural design
- 39 Horizontal bar penetrating through CMU lapping horizontal reinforcement in concrete per structural design
- 93 Concrete haunch
- 96 Footing
- 97 Bond beam per structural design

KEYWORDS

CMU, Concrete masonry, Block, Structural, Reinforced, Freestanding, Cantilever, Northwest, 02.120.0211

TITLE

Freestanding wall

SCALE

None

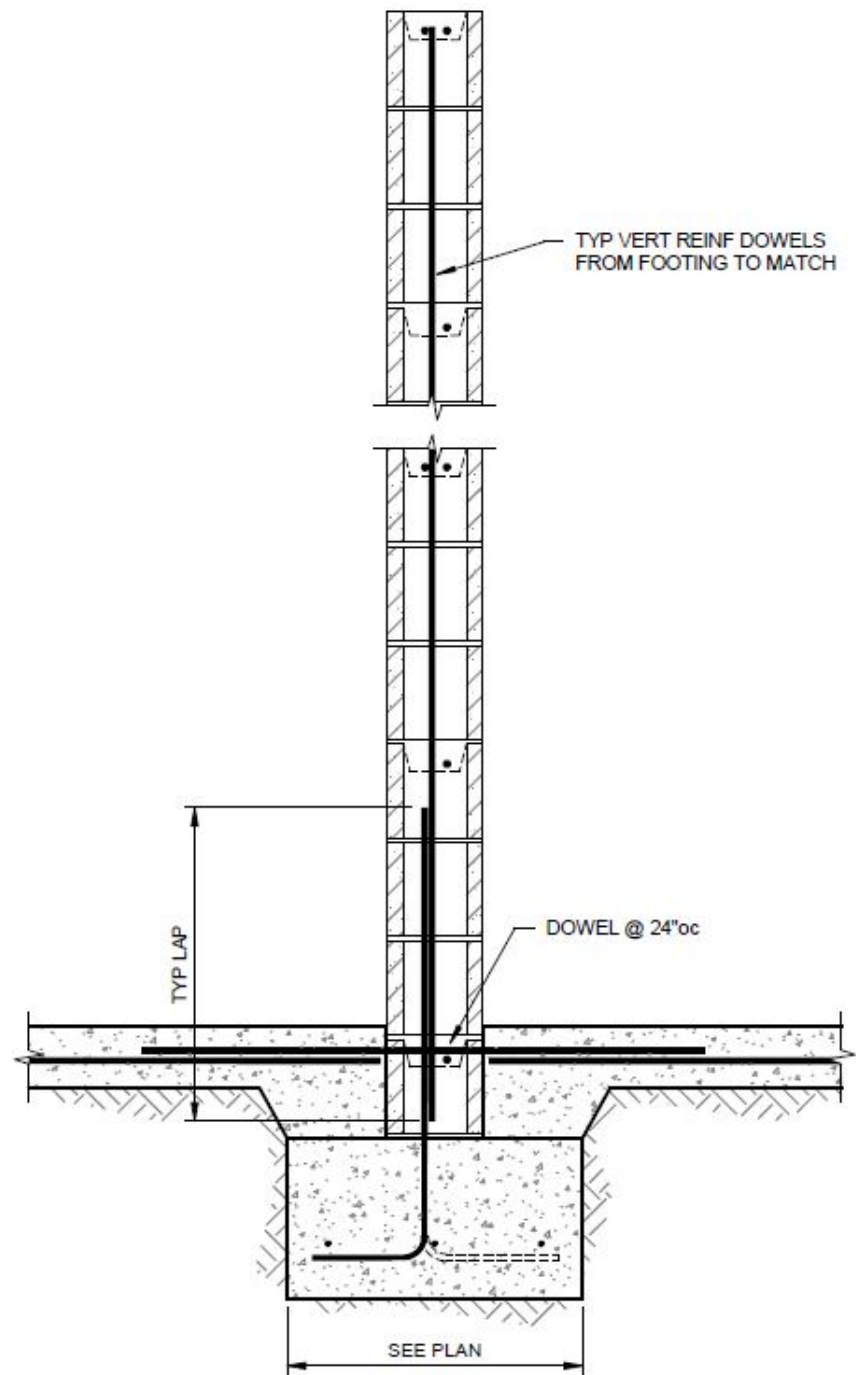
REV.

06/15/20

SHEET NO.

02.120.0211

Drawing No.	02.120.0211
Drawing Title	Freestanding wall
Description	This detail shows the a freestanding single wythe reinforced concrete masonry wall. Vertical dowels with horizontal hooks in alternating directions overlap the vertical reinforcement with development length as designed. Horizontal dowels through penetrate the base course of CMU and overlap the horizontal reinforcement in the concrete slab. This detail as shown is intended to illustrate a general concept or method of construction. Details that show different or modified concepts or methods can be of equal validity and should not be excluded from consideration. this detail shall not be used for construction without the approval an signature of a licensed design professional. The person using this detail shall be responsible for its complete design and proper application.
3D Warehouse Link	https://3dwarehouse.sketchup.com/model/2448cf24-c74a-4fdc-ad8f-8ff6893ba742/021200211-Freestanding-wall
Embed Code for 3D Warehouse Model	<iframe src="https://3dwarehouse.sketchup.com/embed/2448cf24-c74a-4fdc-ad8f-8ff6893ba742" frameborder="0" scrolling="no" marginheight="0" marginwidth="0" width="580" height="326" allowfullscreen></iframe>
IMI Interactive Model Blog Link	https://imisketchupmodels.blogspot.com/2020/06/021200211-freestanding-wall.html
IMI MDS Link	
GIF Link	
GIF Link	
Team	Tonia Sorrell-Neal, Scott Conwell
Notes	
Date Revised	6/15/2020



THIS DETAIL AS SHOWN IS INTENDED TO ILLUSTRATE A GENERAL CONCEPT OR METHOD OF CONSTRUCTION. DETAILS THAT SHOW DIFFERENT OR MODIFIED CONCEPTS OR METHODS CAN BE OF EQUAL VALIDITY AND SHOULD NOT BE EXCLUDED FROM CONSIDERATION. THIS DETAIL SHALL NOT BE USED FOR CONSTRUCTION WITHOUT THE APPROVAL AND SIGNATURE OF A LICENSED DESIGN PROFESSIONAL. THE PERSON USING THIS DETAIL SHALL BE RESPONSIBLE FOR ITS COMPLETE DESIGN AND PROPER APPLICATION.

FIGURE 11 - FREE STANDING WALL