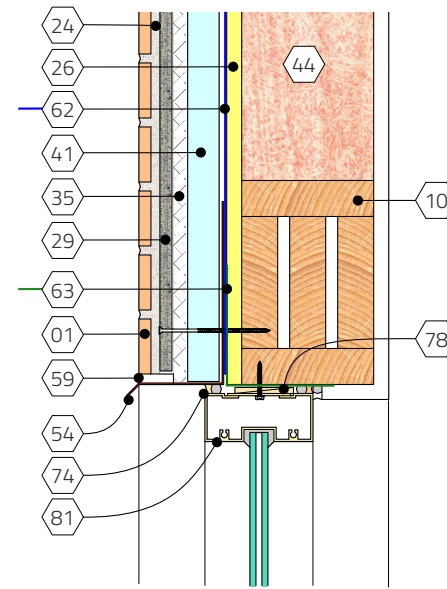
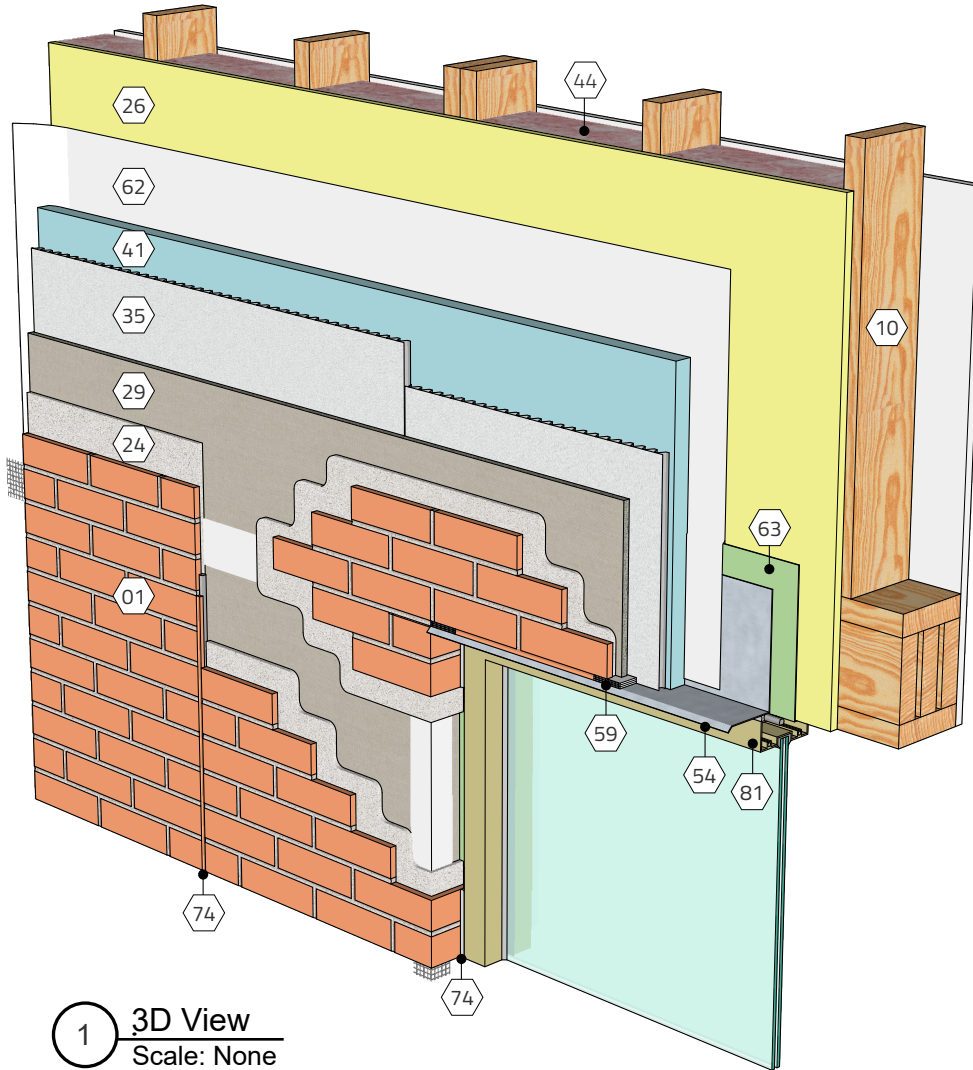
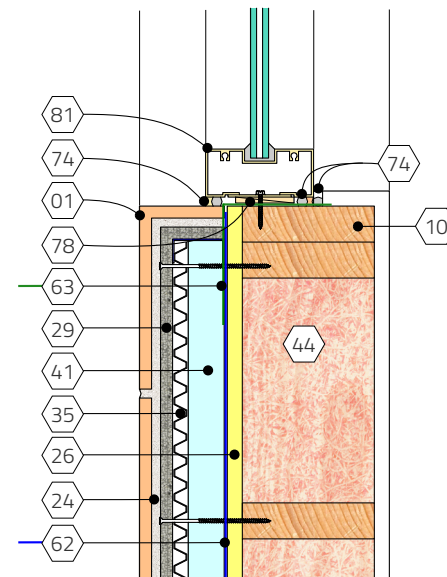


KEY NOTES

- 01 Adhered brick veneer
- 03 Adhered stone sill
- 10 Wood stud framing
- 24 Mortar bond coat / setting bed
- 26 Glass mat reinforced gypsum sheathing
- 29 Cement board
- 35 Drainage medium
- 41 Insulation, continuous (CI)
- 44 Insulation in stud cavity
- 51 Flashing
- 54 Metal pan flashing / drip edge
- 59 Weep vent
- 62 Building wrap
- 63 Rough opening treatment
- 74 Sealant & backer rod
- 75 Sealant
- 78 Shims
- 81 Window assembly



2 Head
Scale: 1 1/2" = 1'-0"



3 Jamb
Scale: 1 1/2" = 1'-0"

KEYWORDS

Adhered veneer, AVM, Thin brick,
Window sill, Sill, Wood studs

TITLE

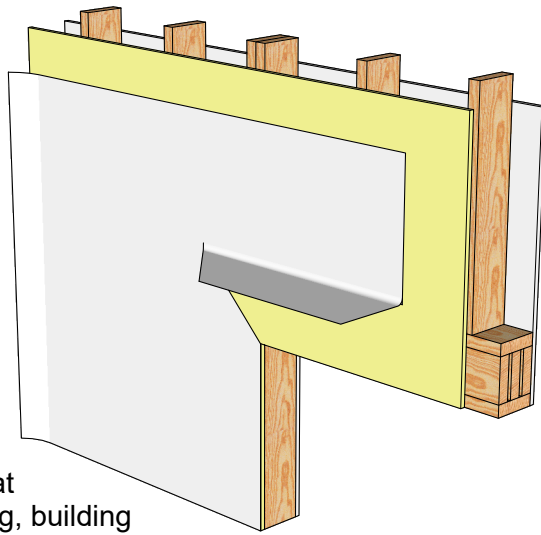
Window head | Adhered brick veneer, wood stud backing

REV.

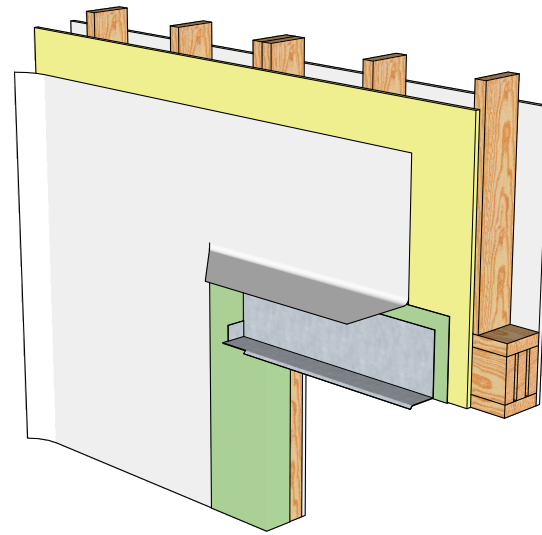
11/09/21

SHEET NO.

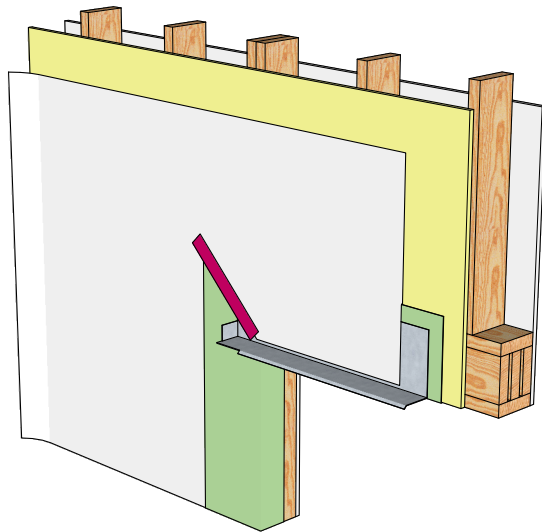
01.090.0601



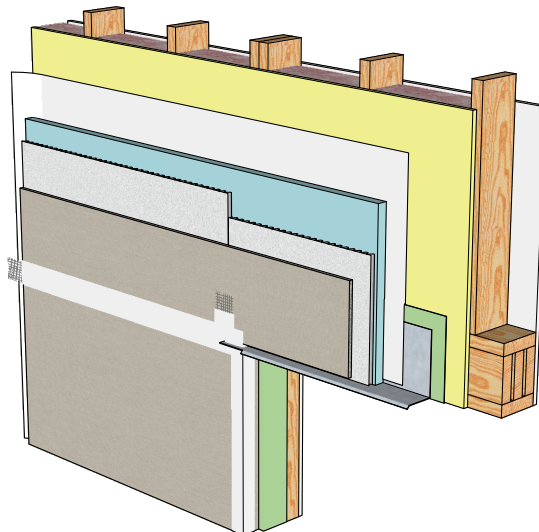
1. Wood studs, glass mat reinforced gyp. sheathing, building wrap w/ slit to pull up temporarily



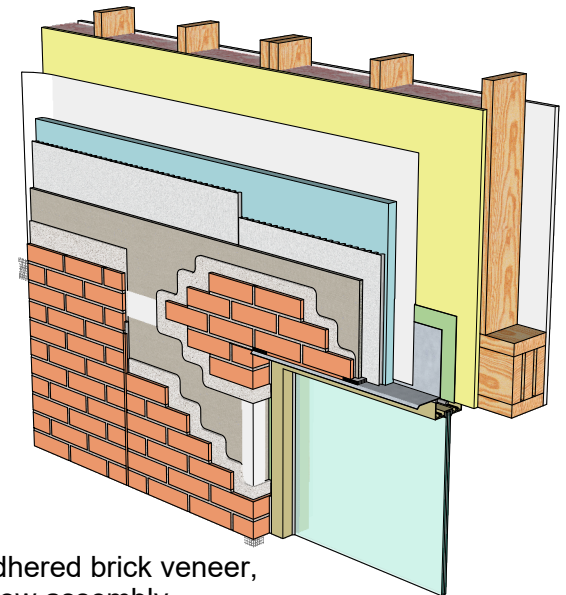
2. Rough opening protection and flashing installed behind building wrap



3. Building wrap reinstalled over rough opening protection and flashing; tape and seal



4. Insulation, drainage mat, cement board w/ joint treatment



5. Adhered brick veneer, window assembly, vertical expansion joint

TITLE

Window head sequencing | Adhered brick veneer, wood stud backing

REV.

11/09/21

SHEET NO.

01.090.0401