

- 01 Brick veneer
 - 02 Concrete masonry
 - 04 Masonry coping w/ sloped top, overhang, & saw-cut drip
 - 17 Roof decking
 - 22 Grout per structural
 - 26 Deck sheathing
 - 28 Plywood
 - 30 Cover board
 - 31 Horizontal joint reinforcement
 - 32 Veneer anchor
 - 33 Split tail anchor
 - 36 Open drainage cavity
 - 37 Steel reinforcement per structural design
 - 40 Kerf, fill w/ sealant (sealant not shown)
 - 41 Insulation
 - 42 Roof insulation
 - 51 Thru-wall flashing w/ integral drip
 - 52 Termination bar w/ cont. bead of sealant @ top
 - 55 Counterflashing
 - 56 Membrane patch @ penetration
 - 59 Weep vent
 - 60 Vents at top of air space, optional
 - 61 Air/moisture/vapor barrier as req'd
 - 62 Roof membrane
 - 63 Transition membrane
 - 66 Vapor control layer
 - 72 Brick expansion joint
 - 74 Sealant & backer rod
 - 75 Compressible filler
 - 78 Shim as req'd
 - 79 Adhesive/sealant
 - 95 Roof structure
 - 97 Bond beam per structural design
- KEY NOTES**

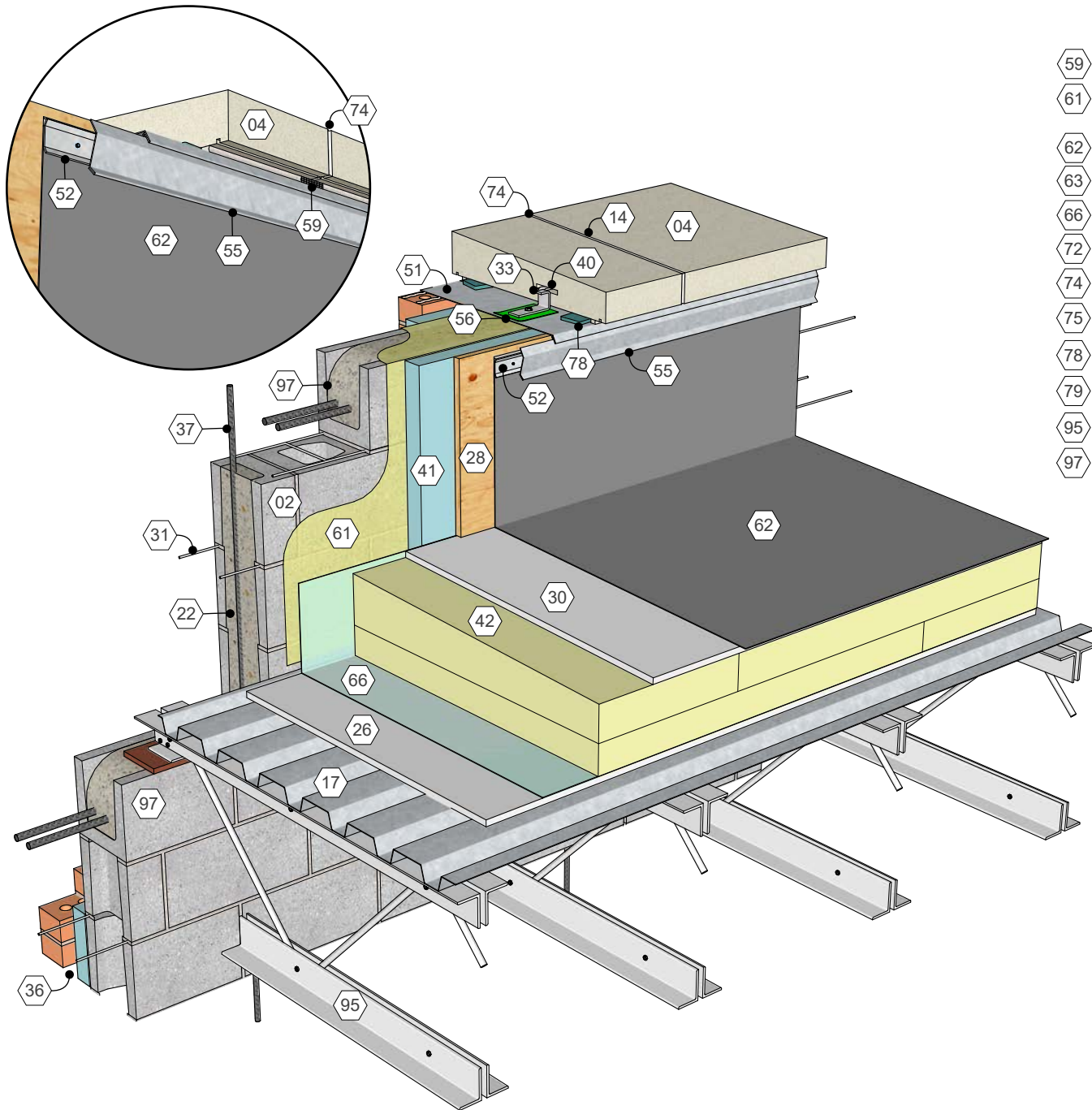
KEY WORDS
 Anchored veneer, CMU, Cavity wall, Top of wall, Split tail anchor, Coping, Wall cap, Flashing, 01.030.0901



800-IMI-0988 www.imiweb.org

© 2017 International Masonry Institute

Top of Wall, Outside View | Anchored Brick veneer, CMU Backing
 Detail 01.030.0901 Rev. 05/14/19



KEY NOTES

- 01 Brick veneer
- 02 Concrete masonry
- 04 Masonry coping w/ sloped top, overhang, & saw-cut drip
- 17 Roof decking
- 22 Grout per structural
- 26 Deck sheathing
- 28 Plywood
- 30 Cover board
- 31 Horizontal joint reinforcement
- 32 Veneer anchor
- 33 Split tail anchor
- 36 Open drainage cavity
- 37 Steel reinforcement per structural design
- 40 Kerf, fill w/ sealant (sealant not shown)
- 41 Insulation
- 42 Roof insulation
- 51 Thru-wall flashing w/ integral drip
- 52 Termination bar w/ cont. bead of sealant @ top
- 55 Counterflashing
- 56 Membrane patch @ penetration
- 59 Weep vent
- 61 Air/moisture/vapor barrier as req'd
- 62 Roof membrane
- 63 Transition membrane
- 66 Vapor control layer
- 72 Brick expansion joint
- 74 Sealant & backer rod
- 75 Compressible filler
- 78 Shim as req'd
- 79 Adhesive/sealant
- 95 Roof structure
- 97 Bond beam per structural design

KEY WORDS

Anchored veneer, CMU, Cavity wall, Top of wall, Split tail anchor, Coping, Wall cap, Flashing, 01.030.0901

International Masonry Institute



800-IMI-0988

www.imiweb.org

Top of Wall, Inside View | Anchored Brick veneer, CMU Backing

Detail 01.030.0901

Rev. 05/14/19