

THRU BOLT OR
LAG BOLT
DEPENDENT
UPON LOADING

1 1/2"

GAP

INSTALL PLATES TO
ATTACH TO BEAM
SEE HL-3

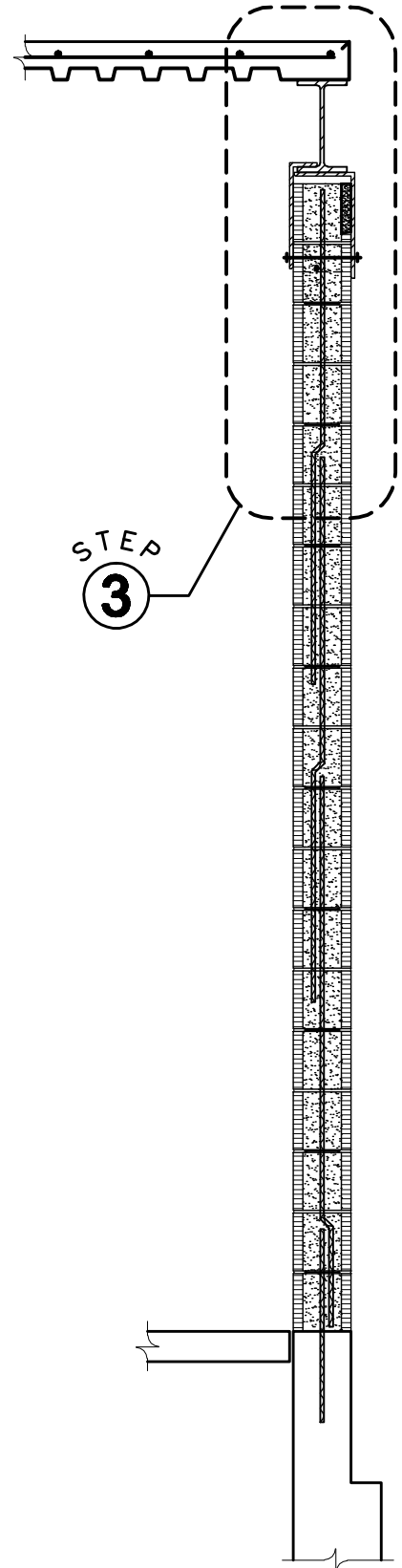
RAISE TOP VERTICAL
REINFORCING BAR
TO TOP OF HYBRID
CMU WALL THROUGH
OPENING IN FACE
SHELL OF CMU.
ADD GROUT TO
FILL REMAINING CMU
VOID AND PATCH
OPENING.

STEP
3

NOTES:

1. FOR TYPE I HYBRID, GAP MUST BE SIZED TO ACCOMMODATE DRIFT AND DEFLECTION OF BEAM. PROVIDE BACKER ROD AND SEALANT SIMILAR TO C-1.
2. FOR TYPE II AND TYPE III HYBRID, FILL GAP WITH DRY PACK.
3. SIZE THRU BOLTS AND PLATES TO TRANSFER SHEAR.

SCALE: 3/4" = 1'-0"



SCALE: 1/2" = 1'-0"



RYAN-BIGGS ASSOCIATES, P.C.

291 River Street p 518 272.6266
Troy, NY 12180 f 518 272.4467
www.ryanbiggs.com

SUBJECT: WALL CONSTRUCTION
SEQUENCE –
LOW LIFT GROUT

PAGE: LL-3

JOB NO.: 9128
PROJECT: HYBRID MASONRY

DATE: 8/19/08
BY: DTB