

GROUT UP TO
BEGINNING OF LAP
WITH SECOND
VERTICAL
REINFORCING BAR

CENTER FIRST
REINFORCING
BAR

FOUNDATION
LAP LENGTH

T/SLAB

DOWEL.
DRILL OR CAST

CONCRETE
FOUNDATION

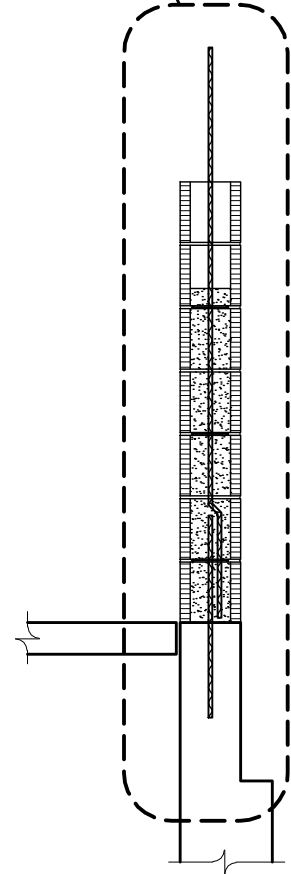
STEP
1

NOTES:

1. FOUNDATION LAP LENGTH = TENSION LAP FOR TYPE I AND TYPE II_a HYBRID. 1'-0" LAP FOR TYPE II_b HYBRID.
2. HORIZONTAL REINFORCEMENT NOT SHOWN.

SCALE: 3/4" = 1'-0"

STEP
1



SCALE: 1/2" = 1'-0"



RYAN-BIGGS ASSOCIATES, P.C.

291 River Street p 518 272.6266
Troy, NY 12180 f 518 272.4467
www.ryanbiggs.com

SUBJECT: WALL CONSTRUCTION
SEQUENCE –
LOW LIFT GROUT

PAGE: LL-1

JOB NO.: 9128
PROJECT: HYBRID MASONRY

DATE: 8/19/08
BY: DTB