

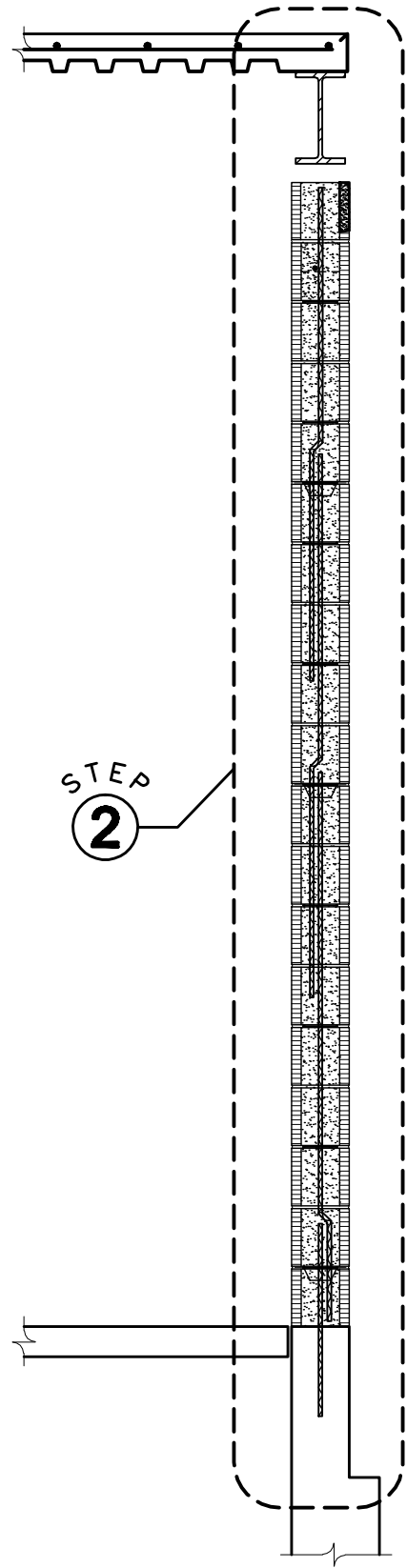
BOND BEAM WITH REINFORCEMENT

RAISE TOP VERTICAL REINFORCING BAR TO TOP OF HYBRID CMU WALL THROUGH OPENING IN FACE SHELL OF CMU
 ADD GROUT USING HIGH LIFT METHODS. FILL ENTIRE CMU VOID AND PATCH OPENING.

TENSION LAP LENGTH

STEP
 2

SCALE: 3/4" = 1'-0"



STEP
 2

SCALE: 1/2" = 1'-0"



RYAN-BIGGS ASSOCIATES, P.C.

291 River Street p 518 272.6266
 Troy, NY 12180 f 518 272.4467
 www.ryanbiggs.com

SUBJECT: WALL CONSTRUCTION
 SEQUENCE –
 HIGH LIFT GROUT

PAGE: HL-2

JOB NO.: 9128
 PROJECT: HYBRID MASONRY

DATE: 8/19/08
 BY: DTB