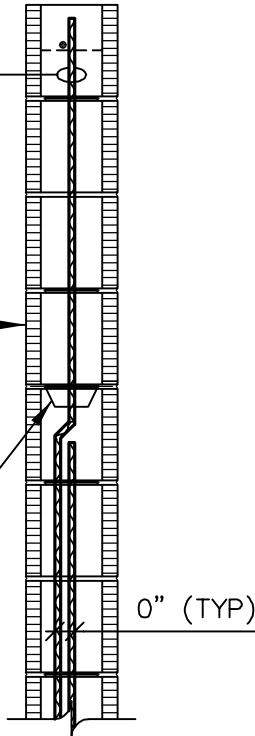


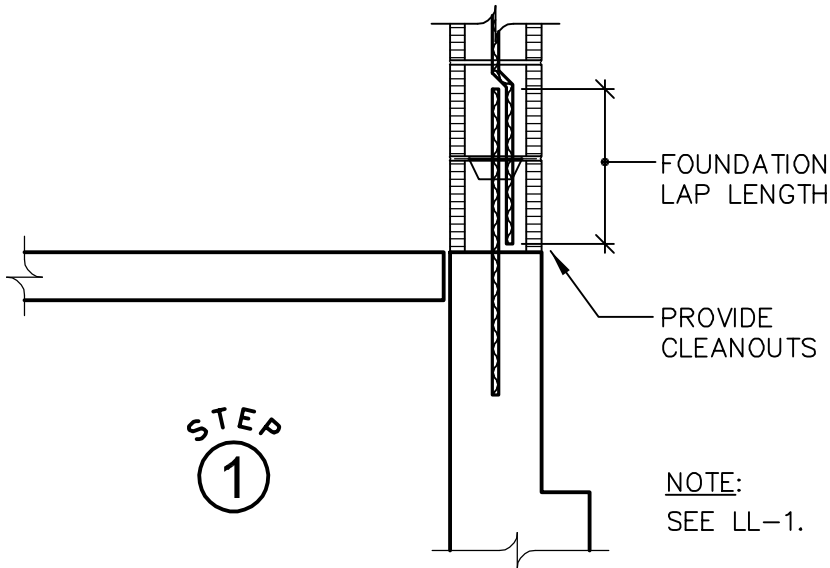
TOP VERTICAL BAR IS TEMPORARILY HELD BELOW LAST COURSE OF HYBRID CMU WALL

BUILD WALL WITH REINFORCING BARS PLACED AT REQUIRED LOCATIONS. (NO GROUT)

REBAR POSITIONER TO HOLD BAR (TYP)



0" (TYP)



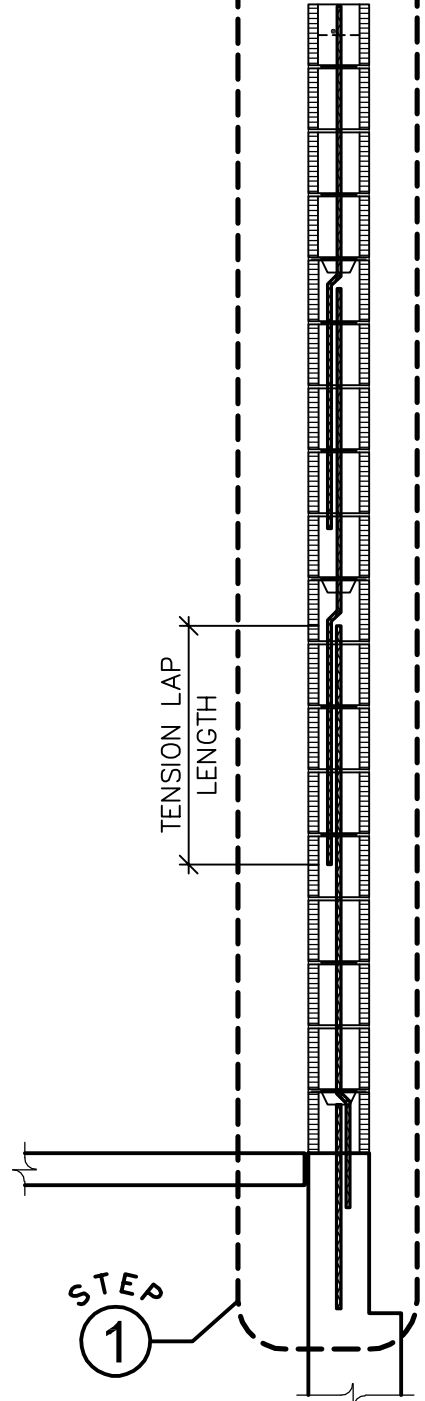
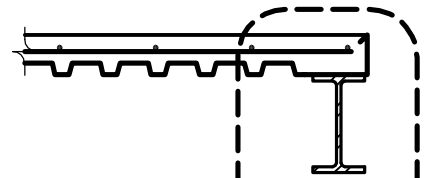
FOUNDATION LAP LENGTH

PROVIDE CLEANOUTS

STEP
1

NOTE:
SEE LL-1.

SCALE: 3/4" = 1'-0"



TENSION LAP LENGTH

STEP
1

SCALE: 1/2" = 1'-0"



RYAN-BIGGS ASSOCIATES, P.C.

291 River Street p 518 272.6266
Troy, NY 12180 f 518 272.4467
www.ryanbiggs.com

SUBJECT: **WALL CONSTRUCTION SEQUENCE - HIGH LIFT GROUT**

PAGE: HL-1

JOB NO.: 9128
PROJECT: HYBRID MASONRY

DATE: 8/19/08
BY: DTB