

3/4" (19 mm) PLYWOOD END
PANEL, MOLD WIDTH + 2"
(50 mm) x 7 5/8" (190 mm) (2)

3/4" (19 mm) PLYWOOD SIDE
PANEL - BLOCK WIDTH + 2"
(50 mm) x 7 5/8" (190 mm) (2)

GROUT SPACE TYPICAL,
HEIGHT 2x WIDTH

POROUS LINING ON
FACE OF UNITS (2)

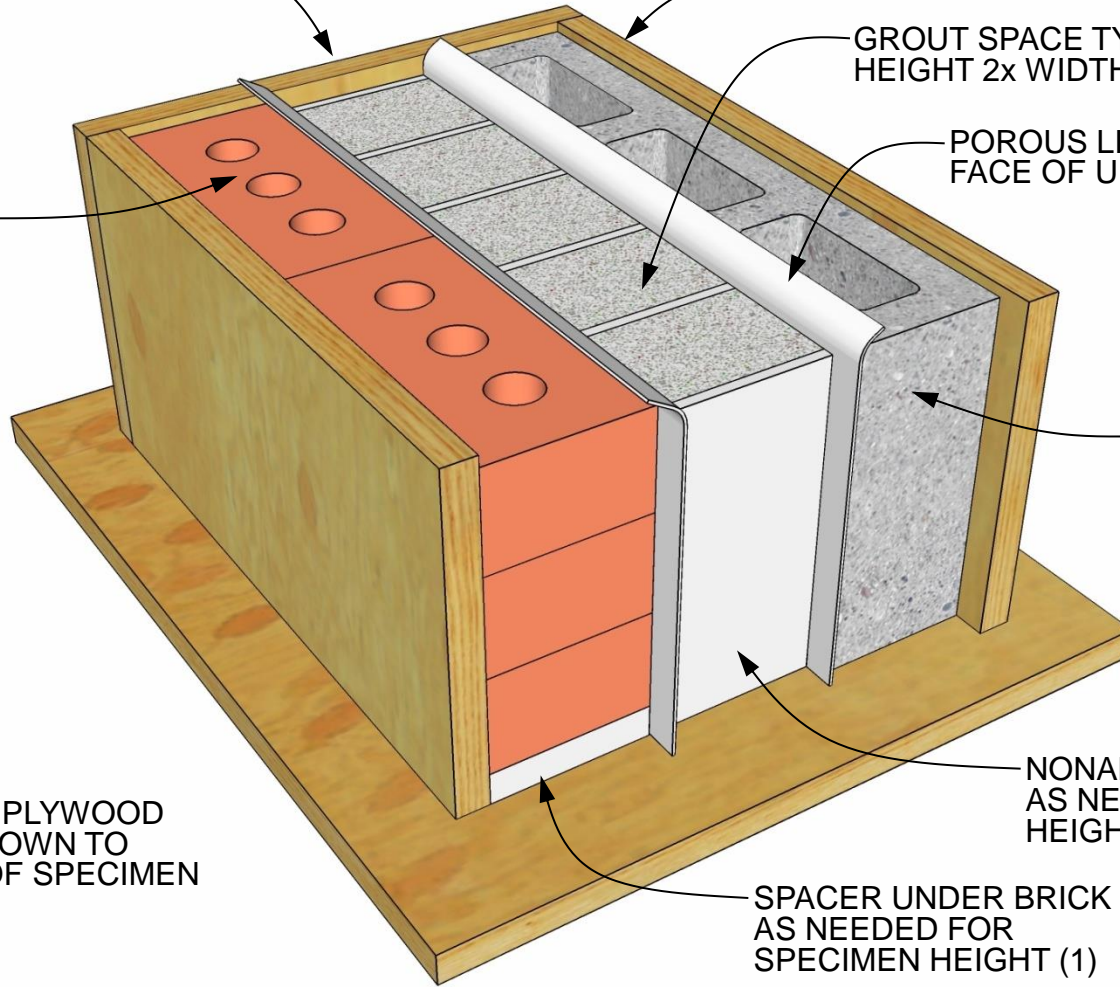
BRICK, TYP.

CONCRETE
MASONRY UNIT (1)

NOTE: FRONT PLYWOOD
PANEL NOT SHOWN TO
ALLOW VIEW OF SPECIMEN

NONABSORBENT SPACER (6)
AS NEEDED FOR SPECIMEN
HEIGHT AND WIDTH

SPACER UNDER BRICK
AS NEEDED FOR
SPECIMEN HEIGHT (1)



GROUT MOLD

DIAGRAM 02.410.0103

REV. 07/29/09

International Masonry Institute



800-IMI-0988 www.imiweb.org

© 2011 INTERNATIONAL MASONRY INSTITUTE