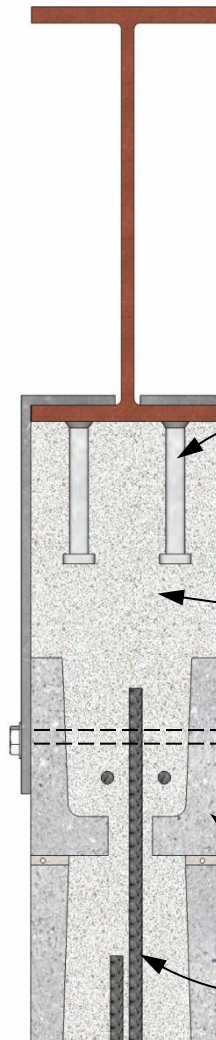
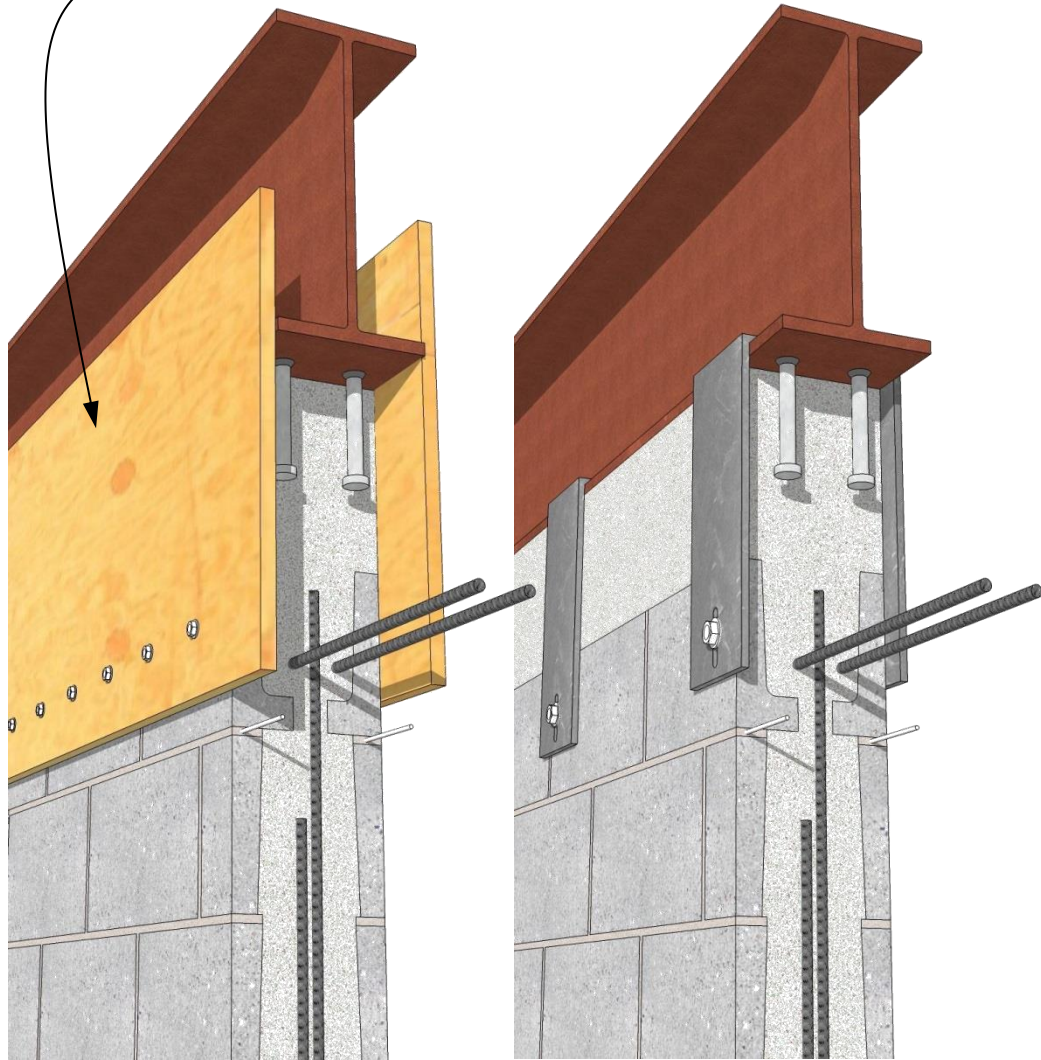


TEMPORARY FORMWORK
FOR GROUT



- STUDS WELDED TO
UNDERSIDE OF BEAM
- 1/4" THK x 6" WIDE PLATES
FOR SHEAR TRANSFER;
WELD TO BEAM AFTER CMU
PLACEMENT
- OPTION 3: GROUT SOLID
FOR TYPE II OR TYPE III
HYBRID ONLY
- THROUGH-BOLT OR
LAG BOLT AS REQ'D
FOR SHEAR TRANSFER
- BOND BEAM AT TOP
COURSE
- GROUT & REINFORCING
AS REQ'D

UNDERSIDE OF BEAM OPTION 3, TYPE II OR TYPE III HYBRID ONLY

DETAIL 02.120.1203

REV. 03/02/09

International Masonry Institute



800-IMI-0988 www.imiweb.org

© 2011 INTERNATIONAL MASONRY INSTITUTE