

BOND BEAM

ROOF DECK

BOND BEAM

NOTE: FLASHING, WALL CAP, FACE BRICK, AND OTHER NON-STRUCTURAL COMPONENTS ARE NOT SHOWN FOR CLARITY

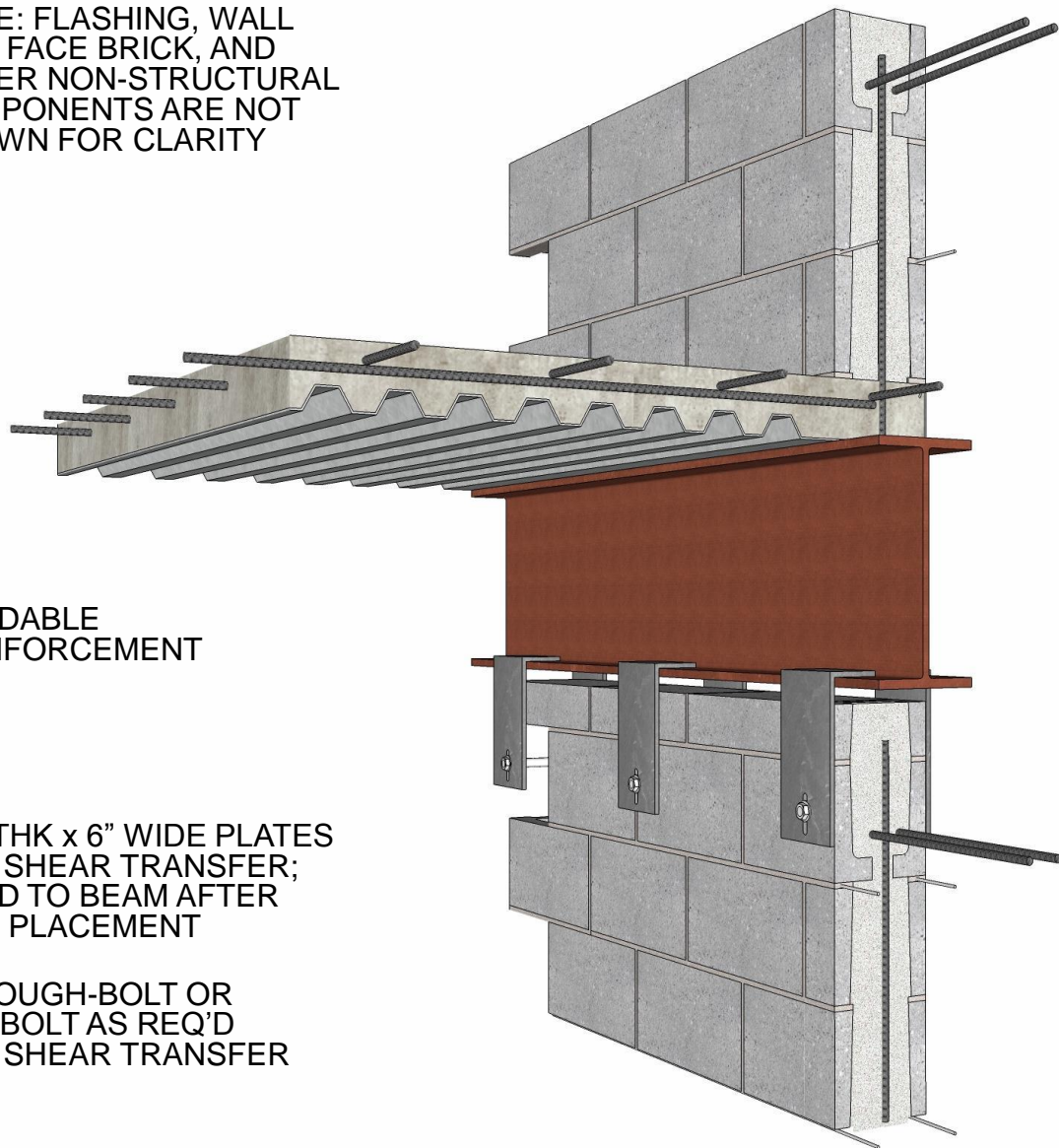
WELDABLE REINFORCEMENT

1/4" THK x 6" WIDE PLATES FOR SHEAR TRANSFER; WELD TO BEAM AFTER CMU PLACEMENT

THROUGH-BOLT OR LAG BOLT AS REQ'D FOR SHEAR TRANSFER

GROUT & REINFORCING AS REQ'D

SECTION



3D VIEW

**FLOOR CONNECTION DETAIL** OPTION 1

DETAIL 02.120.0711

REV. 03/02/09

International Masonry Institute



800-IMI-0988 [www.imiweb.org](http://www.imiweb.org)

© 2011 INTERNATIONAL MASONRY INSTITUTE