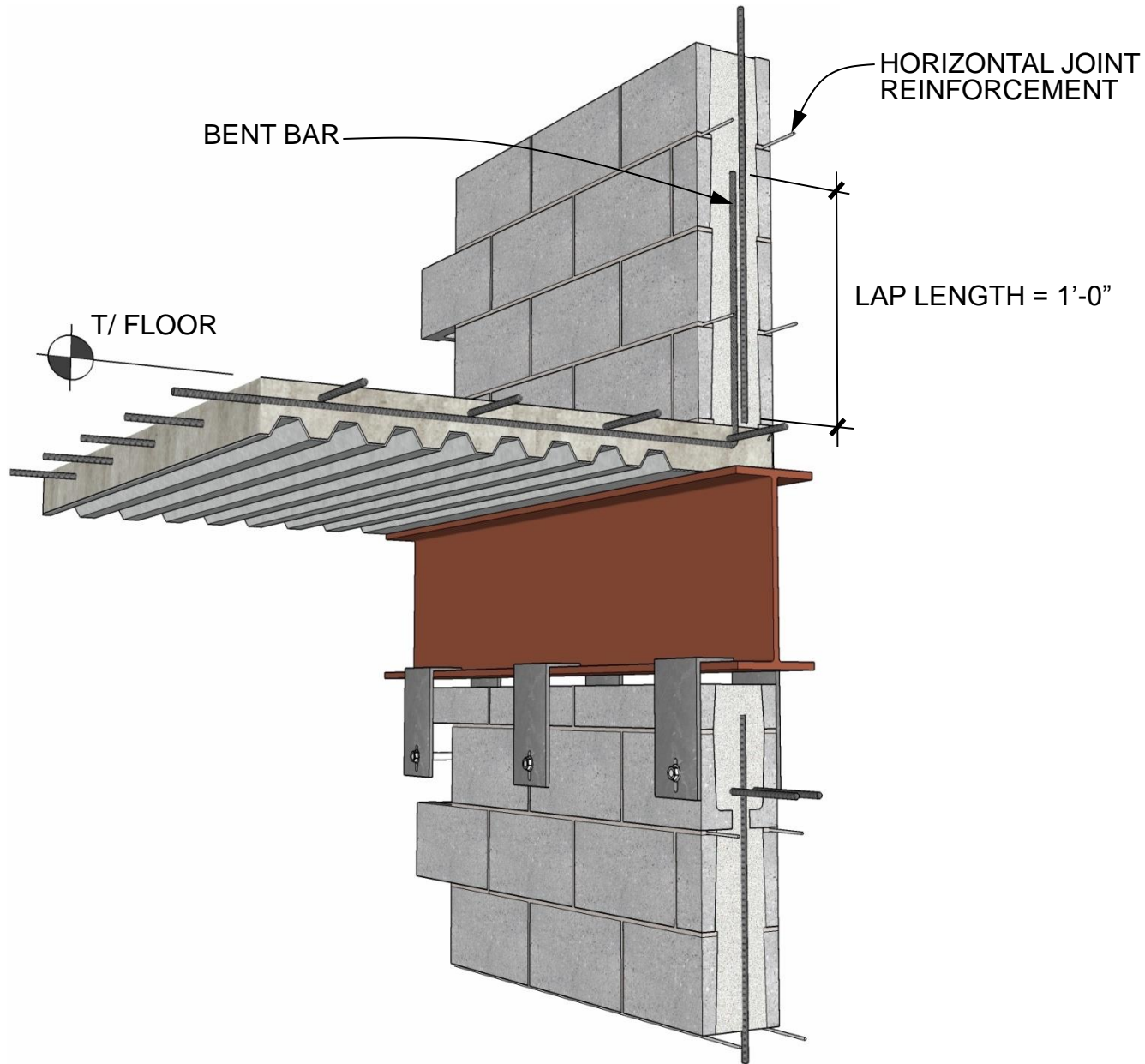


FIG. 4  
IMI TECH BRIEF 02.13.02



**FLOOR DETAIL**

HYBRID TYPE IIB

DETAIL 02.120.0702

REV. 07/27/09

International Masonry Institute



800-IMI-0988 [www.imiweb.org](http://www.imiweb.org)

© 2011 INTERNATIONAL MASONRY INSTITUTE