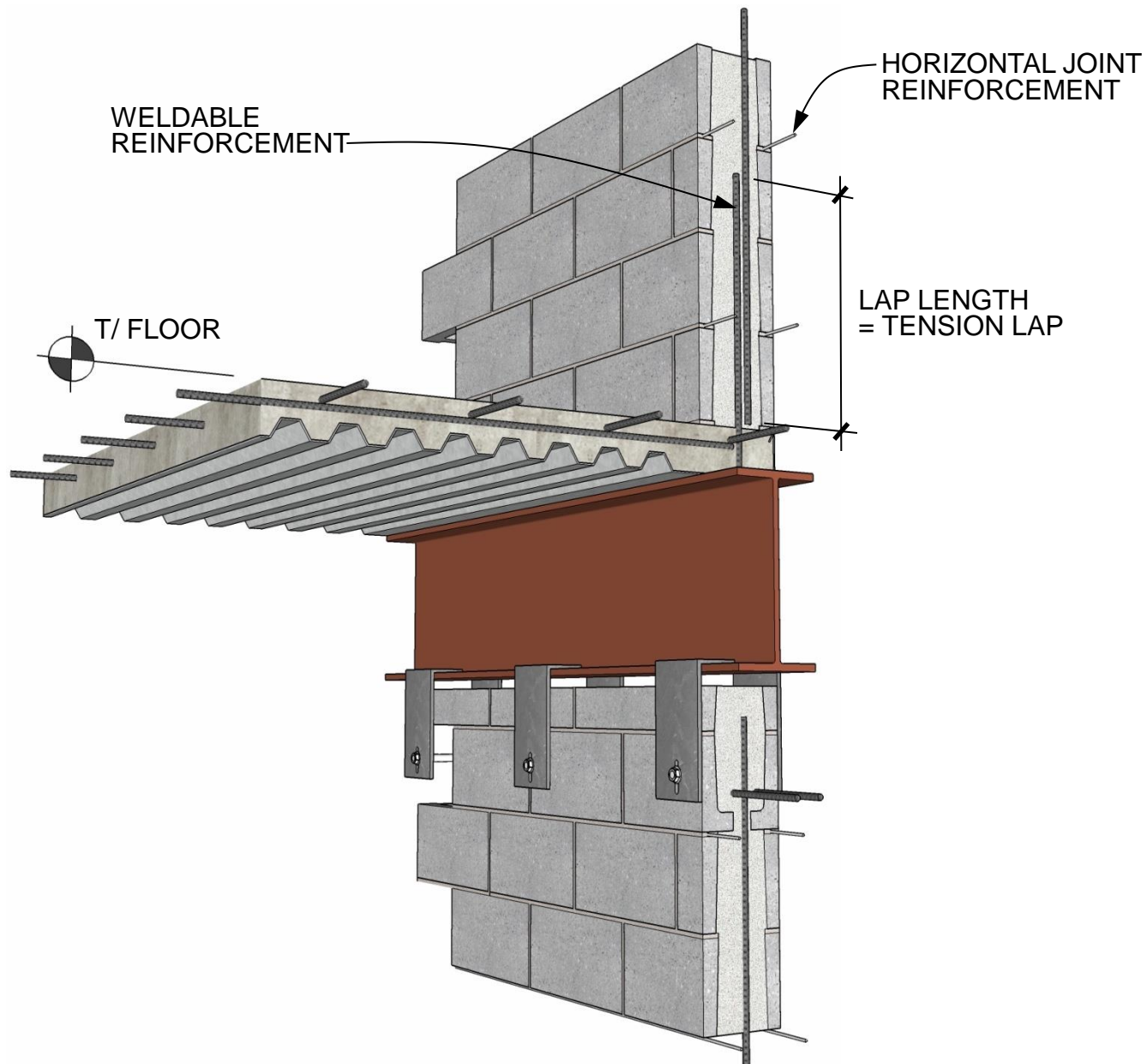


FIG. 2  
IMI TECH BRIEF 02.13.02



# FLOOR DETAIL

DETAIL 02.120.0701

HYBRID TYPE I & IIa

REV. 07/27/09

International Masonry Institute



800-IMI-0988 [www.imiweb.org](http://www.imiweb.org)

© 2011 INTERNATIONAL MASONRY INSTITUTE