

MASONRY COPING: LIMESTONE, CAST STONE, CALCIUM SILICATE, OR PRECAST CONCRETE; OVERHANG MASONRY WALL 1½" MIN.; SLOPED TOP

S.S. DOWEL W/ SEALANT AROUND PENETRATIONS THROUGH FLASHING

SEALANT & BACKER ROD, BOTH SIDES OF WALL CAP

GROUT OR MORTAR FILL FOR DOWEL ANCHORAGE AND FLASHING SUPPORT

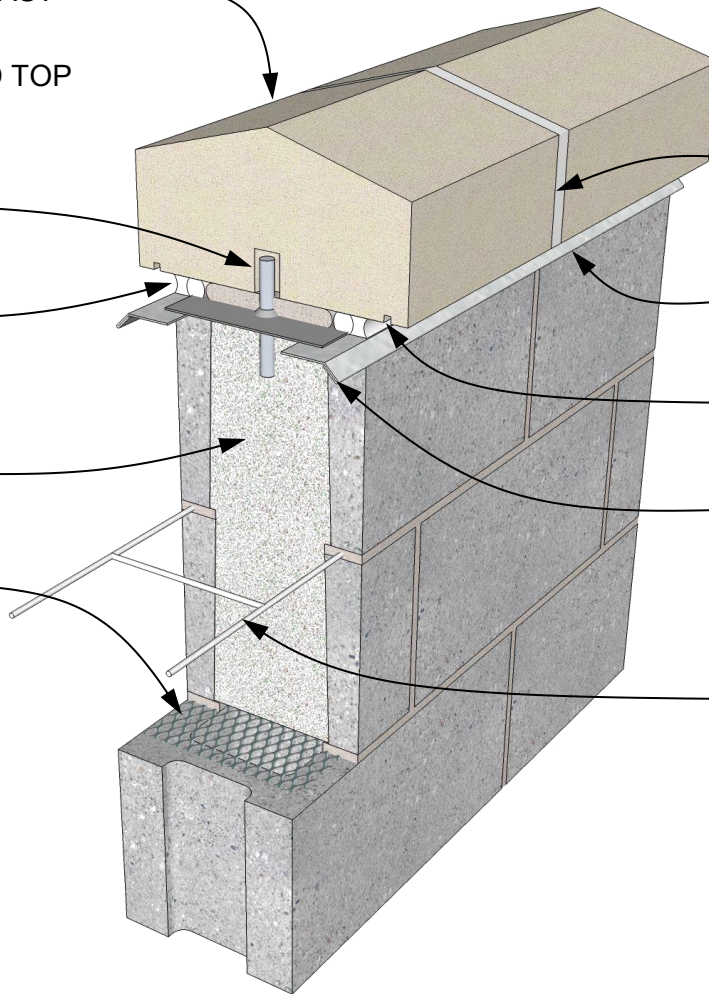
MESH TO RETAIN GROUT OR MORTAR FILL

SEE DETAIL 01.030.0811 FOR WALL CAP JOINT OPTIONS

S.S. FLASHING DRIP, BOTH SIDES OF CAP  
1/8" SAW-CUT DRIP, BOTH SIDES OF WALL CAP

SEALANT BELOW DRIP, OPT. (NOT SHOWN)

HORIZONTAL JOINT REINFORCEMENT



**MASONRY WALL CAP** SINGLE WYTHE CMU  
DETAIL 02.010.0801 REV. 11/04/08

International Masonry Institute



800-IMI-0988 [www.imiweb.org](http://www.imiweb.org)

© 2011 INTERNATIONAL MASONRY INSTITUTE