

2+AIR SPACE RECOMMENDED;
1+MIN. REQ'D FOR DRAINAGE
WALLS

METAL STUDS

5/8+EXTERIOR SHEATHING

ADJUSTABLE WALL TIES @
16+O.C. VERTICALLY AND
24+O.C. HORIZONTALLY

WATER-RESISTANT MEMBRANE

MECH. FASTENED TERM. BAR

BRICK VENEER

RIGID INSULATION

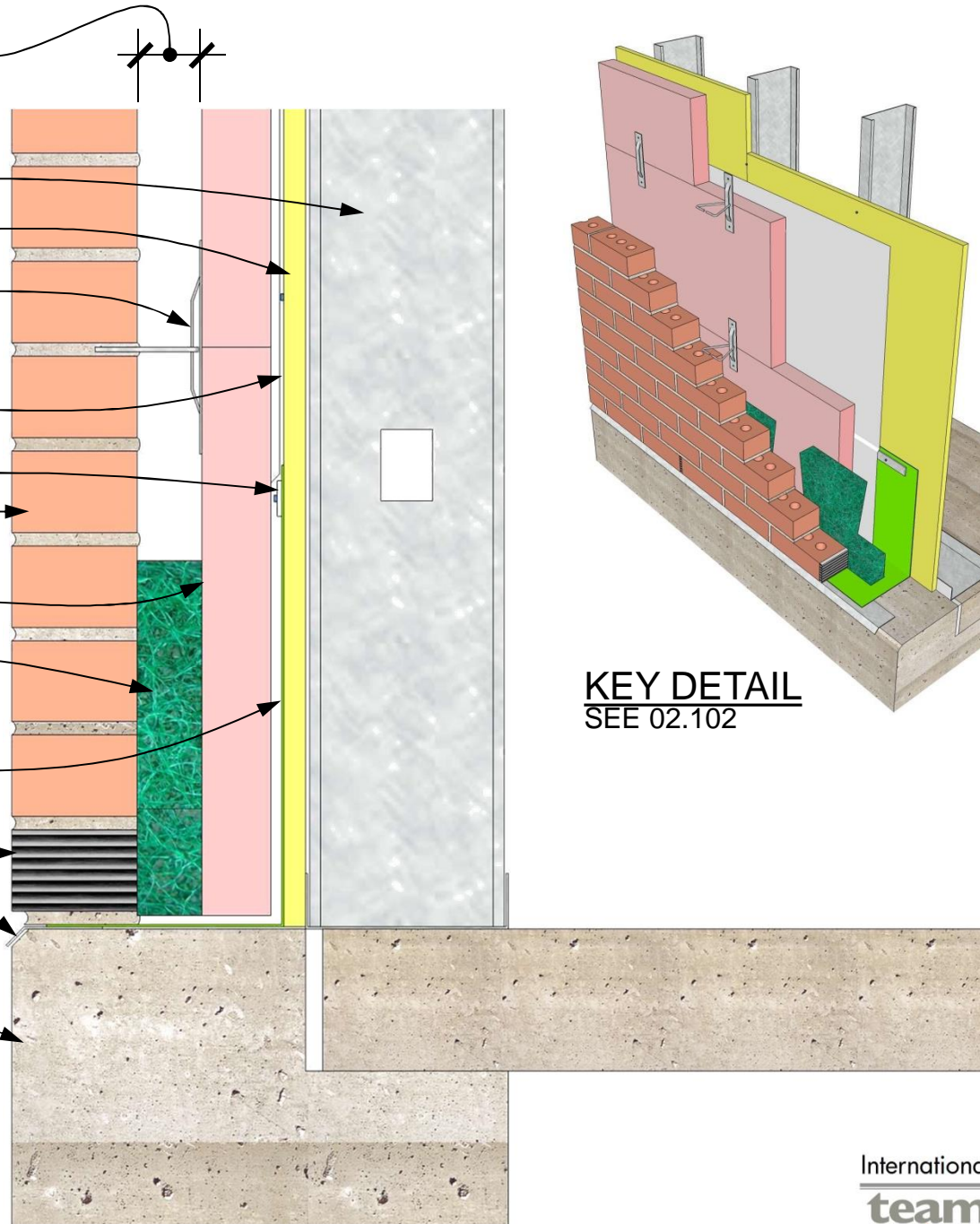
CAVITY INSERT/ MORTAR
COLLECTION DEVICE

THRU-WALL FLASHING 8+
VERTICAL MIN., ADHERED
TO METAL DRIP EDGE

WEEP VENT

METAL DRIP EDGE SET
IN MASTIC OR SEALANT

FOUNDATION



KEY DETAIL
SEE 02.102

BASE OF WALL DETAIL FLEX. FLASHING, DRIP EDGE, TERM. BAR, MDCD

DETAIL 01.040.0302.2D

REV. 11/13/07

International Masonry Institute



800-IMI-0988 www.imiweb.org

© 2011 INTERNATIONAL MASONRY INSTITUTE