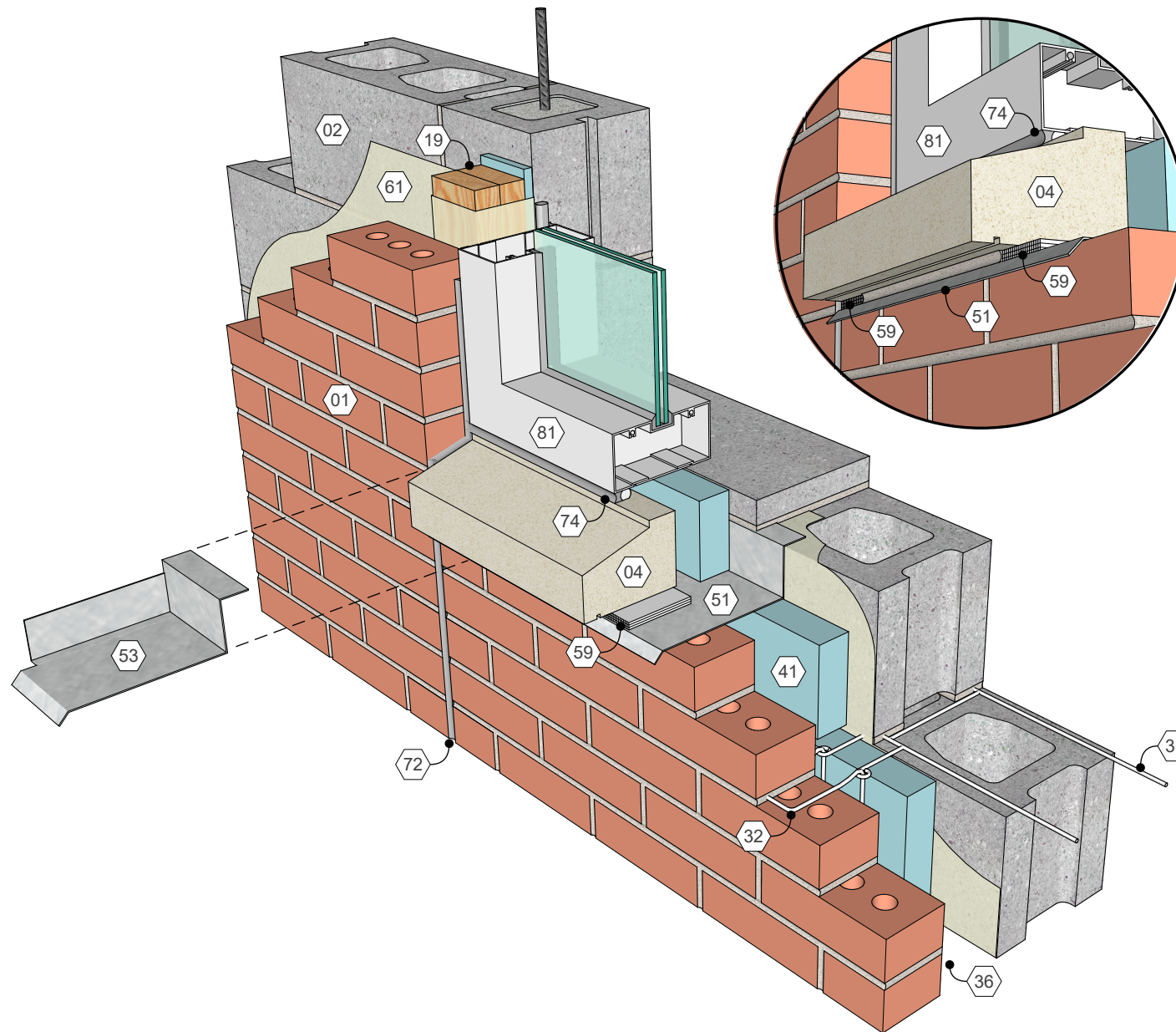


## KEY NOTES

- 01 Brick veneer
- 02 Concrete masonry w/ grout & reinforcement as req'd
- 04 Masonry sill w/ 1/8" x 1/8" cont. saw cut drip
- 19 Wood blocking for window anchorage
- 31 Horizontal joint reinforcement
- 32 Veneer anchor
- 36 Drainage cavity
- 41 Rigid insulation in cavity
- 51 Thru-wall flashing
- 53 Flashing end dam, prefabricated or field-formed
- 59 Weep vent
- 61 Air/moisture/vapor barrier as req'd
- 72 Masonry expansion joint as req'd
- 74 Sealant & backer rod
- 81 Window assembly



## KEY WORDS

Anchored veneer, CMU, Cavity wall, Sill, Window sill, End dam, Flashing, 01.030.0401

Window Sill Brick veneer, CMU backup  
Detail 01.030.0401 Rev. 12/21/17

International Masonry Institute

**team** MASONRY  
DETAILING  
SERIES

800-IMI-0988

www.imiweb.org